

definition...
understanding how...
ies often ascribed to leadership can...
elopment industry, there is a lot of confu...
en leadership and management...
Others see them separate, but give...
st and management are qu...
achieve a goal. Most web ar...
but offer contradict...

HELM COURSES



ABOUT US

ECDIS Ltd is based in Whiteley, along the south coast of the UK near Fareham, Hampshire, making it easily accessible to mariners, whether based locally or needing to travel and stay in one of the nearby hotels. The aim of ECDIS Ltd is to provide a meeting and training facility for the use of the maritime industry.

Since opening in 2008 ECDIS Ltd has doubled in size every year and is now established as one of the world's most respected, endorsed independent training companies offering over 36 training courses. ECDIS Ltd welcomes trainees that meet the entry criteria, regardless of background, culture or religion.

We advocate that trainees with a variety of different backgrounds, experience, attitudes and values will enhance the course and allows the trainee to contribute to the learning experience. Trainees are therefore encouraged to be keen to learn and willing to offer their opinions and experience for the betterment of the course.



Mark Broster
Managing Director

"Last year we invested even more heavily into our facility and staff. We have become the leading independent provider of training with over 30 approved courses. Thank you to our entire repeat client base of 132 shipping companies, every client is important to us, and we look forward to working with you in 2015."

Tel: +44 (0) 1489 559 677

Email: info@ecdis.org

Website: www.ecdis.org



“One of the best training facilities I have had the pleasure of attending. A good learning environment with such warm and friendly staff and lecturers. I will definitely be recommending ECDIS Ltd to the industry I work in!”

– Clive Peinke, MY Nirvana

HELM MANAGEMENT LEVEL

Course Title: Human Element, Leadership and Management (HELM) Management level

Duration 5 Days (35 Hours)

Price £POA*

*Prices are per person, subject to change and exclusive of VAT where applicable

To book please call us on +44 (0)1489 559677

HELM course is required by the MCA for those who are applying for a new CoC at management level. The MCA state that you must include a certificate of completion of an approved HELM management level course with any application received by the MCA after 31 August 2013 for the following CoCs:

- Master and Chief Officer, Reg. II/2 (unrestricted);
- Chief and Second Engineer Reg. III/2 (unrestricted);
- Chief and Second Engineer Reg. III/3 (unrestricted);
- Master and Chief Officer (Yacht < 3000 GT) (Article IX / Reg. II/2);
- Yacht Engineer Y2 and Y1 (<9000 kW) (Article IX / Reg. III/2);
- Master and Chief Officer, Reg. II/2 (limited to Standby, Seismic Survey and Oceanographic Research Vessels);
- Chief Engineer Reg. III/2 (limited to Standby, Seismic Survey and Oceanographic Research Vessels).

HELM MANAGEMENT LEVEL

Teaching Methods

The HELM course will entail components made up of case studies, role play, scenarios, simulation and team exercises.

Prerequisites

Candidates shall hold a deck or engineering certificate of competency at the operational level and meet the minimum seagoing service requirements for the issue of a management level CoC.

Class Limitations

The class size is limited to twelve people due to our opinion that training is optimised when there are twelve people or less in the class, per instructor.

Learner Conditions

ECDIS Ltd welcomes trainees that meet the entry criteria, regardless of background, culture or religion. We advocate that trainees with a variety of different backgrounds, experience, attitudes and values will enhance the course and allows the trainee to contribute to the learning experience. Trainees are therefore encouraged to arrive keen to learn and willing to offer their opinions and experience for the betterment of the course.

Trainers

Instructors and assessors are required to be qualified in accordance with the requirements of Regulation I/6 STCW. All of our trainers are mariners and highly experienced in the practical use of leadership and management, having pushed themselves to their personal limits at sea.

“Professionally run training centre. Shaping a new & better way of training.” – Brett Phillips, Red Funnel



“Very well managed facility and friendly staff, would definitely recommend to anyone”– Anirudh, Associated British Ports



HELM OPERATIONAL LEVEL

Course Title: Human Element, Leadership and Management (HELM) Operational level

Duration 3 Days (21 Hours)

Price £POA* *Prices are per person, subject to change and exclusive of VAT where applicable



To book please call us on +44 (0)1489 559677

The HELM course has been designed for candidates seeking certification under:

- STCW Regulation II/1 – officers in charge of a navigational watch on seagoing ships of 500 GT or more (ie. OOW);
- STCW Regulation III/1 – officers in charge of an engineering watch in a manned; engine-room or as designated duty engineers in a periodically unmanned engine-room (ie. EOOW);
- STCW Regulation III/6 – electro-technical officers.

Based on the MNTB's criteria for Human Element Leadership and Management (HELM) Operational and Management Levels First Edition Sept 2012, the candidates will learn how to control the operation of the ship and care for persons on board at the operational level.

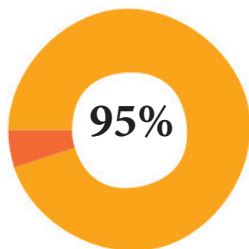
HELM OPERATIONAL LEVEL

Teaching Methods

The HELM course will entail components made up of case studies, role play, scenarios, simulation and team exercises. The learning objectives included within the course are as follows:

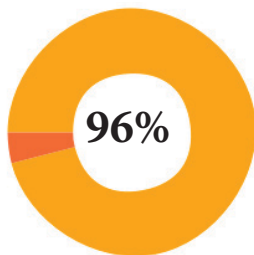
1. Identify good practice in shipboard human resource management.
2. Identify the importance of the 'human element' in shipboard operations.
3. Apply the underpinning knowledge of related international maritime conventions and recommendations, national regulations, and codes of practice and guidelines covered in other mandatory units when controlling the operation of the ship and care for persons on board at the operational level.
4. Apply the elements of task and workload management, including planning, co-ordination, allocation and prioritisation of human and physical resources when controlling the operation of the ship and care for persons on board.
5. Apply effective resource management techniques.
6. Apply the principles and practice of decision-making.
7. Manage fatigue and stress.
8. Contribute to shipboard training, learning, assessing and developing human management.

OUR CUSTOMER'S PERSPECTIVE



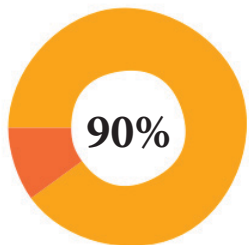
**of our customers
would rate our
overall course as
excellent.**

“...The course and facilities far exceeded my expectations and is the best learning centre I have used to date...”



**of our customers
would rate our
facility as excellent.**

“An excellent training centre which far exceeds other rival centres...”



**of our customers
would rate our
subject knowledge
as excellent.**

“One of, if not, the best maritime course I have ever been on.”

10 REASONS TO CHOOSE ECDIS Ltd

1.

Our Trainers

All of our trainers are specialist navigators, highly experienced in the practical use of ECDIS. Combined our trainers have taught over 1000 mariners.



3.



Our Commitment

We are committed to the pursuit of safer navigational training and standards across the world.

Our Expertise

Trusted advisor to over 60 major shipping companies in over 40 countries for ECDIS support.



5.

7.



Our Facility

Our facility is home to a range of ECDIS manufacturers and a full mission simulator making the learning experience unrivalled.

4.



Our Technology

We continuously push the boundaries of technology in order to make our ambition a reality.



2.

Our Flexibility

The flexibility of our training means that we can train you on the smallest ECDIS systems for yachts, through to large groups of merchant ship ECDIS systems.

Our Courses

Our courses are designed for mariners by mariners, delivered from our facility or anywhere in the world.



6.

8.



Our Mission

To maintain the position as world leaders in the provision of ECDIS training, consultation and mandation solutions in the electronic charting era.

Our Customers

We have a diverse range of customers from large oil companies to individual mariners.



9.

Our Simple Booking Process

Call us on 01489 559 677 and book your place today.



10.

OTHER COURSES WE OFFER



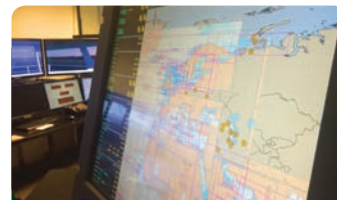
Anti-Piracy Courses



Bespoke Training



Advanced Training Courses



ECDIS Courses



Standard Training Courses



Super Yacht Courses



Bridge Training Courses

Book Your Course

Give us a call on:
+44 (0) 1489 559 677

Or email us at:
bookings@ecdis.org

A collage of various maritime and shipping company logos, including Sealion, SAAB Technologies, serco, WALLEM, V.Ships, NORBULK, MPA SINGAPORE, BAE SYSTEMS, and many others.

OUR CLIENTS



ECDIS Ltd
Atlantic 3600 Building Parkway
Solent Business Park
Whiteley
Fareham
PO15 7AN

www.ecdis.org

+ 44 (0)1489 559677

